

Letter from the President



Wow! Memphis was lots of fun! We just came back from the Memphis EWI Spring Conference and what a great time we had. That Memphis chapter sure knows how to put on a conference. We had great informative speakers, delicious BBQ, an Elvis impersonator, music by the Bouffants, lovely rooms, shopping and most of us even toured GRACELAND to see where the hunk-a-

hunk-a-burning-love lived. What more could a girl want!!! It was great getting together with so many EWI's from across the U.S. and Canada. It makes me look forward to LCAM.

Being the month of May, let me say to everyone that is a mother – HAPPY MOTHER'S DAY. Be it happy or sad, you are to be remembered. We would like to have you invite your special person (be it mother, daughter, grandmother or friend) to the May meeting in honor of Mother's Day month. We will keep the cost for your guest's meal to the \$20 that we have to pay for this one occasion. Nell Mohny will be the speaker and it will be wonderful. Remember that we are going to bless the seniors that are in the Nursing Home and bring them socks, lap blankets, etc.

**Your Chapter President,
Lynda Childress
CEO, Luken Holdings, Inc.**

2009-2010 Officers and Directors

Lynda Childress, President
Luken Holdings, Inc, Chattanooga

Margaret Browning,
Vice President/President Elect
Chattanooga Coca-Cola Bottling Co.

Barbara Tawater, Secretary
Northgate Title Escrow, Inc, Chattanooga

Heather Burrell, Treasurer
MCA Mike Collins & Associates, Chattanooga

Charlie Rosenquist, Sgt-At-Arms
BlueCross BlueShield of Tennessee

Catherine Cox, Membership Director
Lyndhurst Foundation

Michelle Withorn, Program Director
EMJ Corporation

Kerry Smith, Ways & Means Director
State Farm Chattanooga

Barbara Verhine, Publications Director,
The University of Tennessee at Chattanooga

Nancy Harrison, Director-at-Large Law
Offices of Lloyd Stanley

Invite your special friend—be it mother, daughter, sister, friend—to the May meeting in honor of Mother's Day.

- Date:** **Tuesday, May 11, 2010**
5:30 pm—Meet, Greet and Networking
6:00 pm—Dinner
- Where:** **Doubletree Hotel**
Salon B Room
407 Chestnut Street
- Parking:** **Free Parking in the open lot beside the hotel or \$5.00 Valet Parking**
- Speaker:** **Dr. Nell Mohney**
- Topic:** **What is Your AQ?**



Nell Mohney

Dr. Nell Mohney is a native of Shelby, North Carolina and a magna cum laude graduate of Greensboro College, where she was named a Distinguished Alumnus. The Doctor of Humane Letters degree was awarded by Tennessee Wesleyan College.

Nell is a writer, lecturer, motivational speaker and Sunday School teacher. Her column appears weekly in the Chattanooga Times Free Press. She is the author of 13 books, including: *Don't Put A Period Where God Put A Comma, How to be Up on Down Days, Don't Stop Kicking As Long As You Are Ticking, Get a Faith Lift, Develop Your Bounce Back Ability, You Can Soar Like an Eagle, Running the Marathon of Life, Slay Your Giants, and Just Choose Happiness.*

She speaks throughout the state and nation and leads seminars for business, professional and church organizations. Twice she has spoken at the International Women's Conference at the Crystal Cathedral in Garden Grove, California and the Pampered Chef national conventions in Chicago and Toronto, Canada.

In 1993 she was named to the Chattanooga Women of Distinction Hall of Fame, in 1998 she was named a biographee in Marquis' Who's Who in America and in 1999 was named Tennessee Woman of Distinction.

Nell feels her most important roles, however, are as wife, mother and grandmother.

Website Trivia Contest

The website trivia this month might be a little more challenging, but I need your baby picture! The baby picture chosen will be displayed as a “Guess Who” in the slideshow at the May meeting. E-mail your picture to: hburrell@mcollins.com.



I wanted to take a few moments to express my appreciation to Lynda Childress for making the Chattanooga Chapter proud. She was the featured speaker for Developing Volunteers at the 2010 Spring Leadership Conference in Memphis, TN. She stood before fellow EWIs and expounded on the importance each of us share in making a difference in our community and in our organization. Thank you for being a great example to us!

*Sincerely and with much love,
Margaret Browning
President-Elect*



Remember, Ginger Rogers did everything Fred Astaire did, but backwards and in high heels.

Faith Whittlesey

April Who Am I?



I cook for 200 people each Saturday at my church!

I clean house for stress relief.

My future dream business would be to start an Assisted Living Home.

Were you able to guess?

Kathy Sok

Kathy, President of Reliable Building Solutions, Inc., has been a member since 2006.



I love to dig in the dirt.

One time I ate 8 Krispy Kreme doughnuts at one time.

I have a bad addiction—running—and I love it!

Do you know who this is? Check your June Connect for the reveal.

Health Care Center at Standifer Place
(formerly Hamilton County Nursing Home)

Friendship Haven @ Rosewood
(East Chattanooga Area)

Items needed include:

Bedside Touch Lamps

Lap Blankets

Pull Ups- Medium

Digital Clocks

Items for First Aid Kit

Socks

Kitchen Utensils

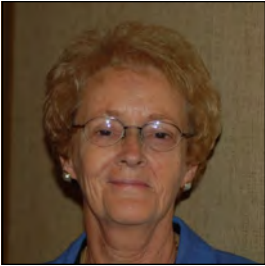
Paper Goods (Plates, Bowls, Knives, Forks and Spoons)



*If I can stop one heart from breaking,
I shall not live in vain.
If I can ease one life the aching,
Or cool one pain,
Or help one fainting robin
Unto his nest again,
I shall not live in vain.
Emily Dickinson*

Membership Committee Report

By: Catherine Cox



Open Classifications for EWI

Listed below are some of the vacant classifications which we can fill for the Chattanooga Chapter.

If you know anyone or have any contacts in these categories, please get in touch with a member of the Membership Committee (Lori Slatton, Margaret Browning, Michelle Withorn, Carolyn Stringer, Catherine Cox, or Joyce Harlin).

Hardware
Home Health Care
Horticulture
Insulation Materials
Iron & Steel Industry
Laundry, Cleaning & Dyeing
Leather industry
Luggage-Plastics
Machinery & Equipment
Meat, Dairy, Poultry & Fish Products
Medical Equipment and Supplies
Metal Mining & Working Industry
Missiles-Rockets
Musical Instruments & Merchandise
Natural Resources

Sergeant At-Arms Report

There were 60 attendees at the
April meeting.

16 Guests Present

44 Representatives Present

1 Lifetime Member Present

2 Sustaining Members Present

60% of Firms Were Present

Nominating Committee Report

By: Nancy Harrison



Please don't forget to fill out the Straw Ballot and return it to me before May 31. You are also welcome to reply in the body of an email - just note each position and corresponding name. Partial Straw Ballots are welcome as well, and feel free to suggest yourself!

The straw ballot is intended only as a guide for the nominating committee to prepare the slate. It in **no way constitutes a vote** for any individual for any office, nor does it in any way restrict the committee's judgment and selection.

The nominating committee looks forward to presenting the 2010-2011 slate of officers to the membership in the July EWIconnect and at the July meeting. At that time (additional) nominations may be made from the floor and, thereafter, may be submitted to the President in writing by any five (5) representatives prior to July 31, at which time the nominations will be closed. Elections and installation will be held at the September annual business meeting.

Ways and Means Committee Report

By: Kerry Smith



Your Ways and Means Committee continues to receive money from your ticket sales for the 'No Dirty Dishes for a Week' fundraiser. We have collected a total of \$5,140 and sold 257 tickets! Great job all! Thanks to ALL of you for working hard to help us with this fundraiser.

We will be drawing the winning ticket at our next EWI of Chattanooga meeting on Tuesday, May 11th at the Doubletree Hotel. All those who bring in money and ticket stubs at the meeting will receive a free raffle ticket! The person selling the most tickets for this fundraiser will receive \$500 towards their LCAM sponsorship!!

If you need more tickets to sell, please contact Melba Wolfe at mlwolfe06@comcast.net or phone her at (423) 309-5545.

Remember the 'winner takes all' and does not have to be present to win. The winner will receive \$700 value getting:

- \$100 – 'Buy it Downtown' Gift Certificate
- \$100 – J Alexander's Restaurant
- \$50 – Red Lobster
- \$50 – Olive Garden
- \$50 – Hiroshi
- \$50 – Big River Grille
- \$50 – Outback Steakhouse
- \$50 – Cracker Barrel
- \$50 – American Café
- \$50 – Back Inn Café

AND

- \$100 – 'On the Run' gas card (to get there!!)

Let's keep the momentum going and have LOTS of money to turn in on the 11th.

DATES TO NOTE

May 6, 2010

Webinar: *The Truth About Negotiation: 7 Strategies for Success*. Register at ewiconnect.com

May 30, 2010

Fellow Applications due to the Corporate Office

May 30, 2010

Return straw ballots to Nancy Harrison. See e-mail from Nancy for form.

June 8, 2010

EWI Chattanooga Chapter Executive Luncheon meeting at noon.

September 23-25, 2010

63rd LCAM in Kansas City

September 22-24, 2011

64th LCAM in Minneapolis

In Honor of Derby Day

Kentucky Derby's Best Mint Julep Recipe

Ingredients: 10 fresh mint leaves, 1 1/2 tsp superfine sugar, seltzer water, crushed ice, 2 1/2 ounces Kentucky bourbon, 1 (4-inch) cocktail straw or coffee stirrer, 1 fresh mint sprig for garnish



Preparation: Place the mint leaves in the bottom of an old-fashioned glass and top with the sugar. Muddle these together until the leaves begin to break down. Add a splash of seltzer water, fill the glass 3/4 full with crushed ice, and add the bourbon. Top with another splash of seltzer, stir, and garnish with a sprig of mint. Serve immediately. Courtesy: [Alton Brown](#)

Melissa's Organizing Tips for May



Sustaining Personal and Professional Change

I love spring – it makes me feel reenergized every year. It represents change. Change can be very motivational, particularly in its earliest stages. Let's assume that we've set goals to become more organized and effective at work. Time passes. Some improvements remain and others remain a struggle. How do we sustain the positive changes in the face of additional obstacles?

Five Tips for Sustaining Change

1. Integrate the change into all of your plans and priorities
2. Ensure appropriate monitoring and feedback systems
3. Anticipate, but don't tolerate derailments
4. Display a positive attitude toward the change
5. Celebrate your successes

Change does not sustain itself. There are daily "opportunities" to veer off your chosen course. However, once solidified, changed behaviors become engrained habits. Then, you're ready for the next change!

Interested in sustaining your change toward an organized office? MBG Organizing Solutions offers Maintenance Plan Packages to help clients continue the organizing process so they can achieve their long-term productivity goals.

For more productivity tips, please go to www.mbgorganizing.com and sign up for my free monthly newsletter.

Nothing endures but change.

Heraclitus



Kristina Smith

Kristina has been employed at First Tennessee Bank, First Horizon National Corporation for 2 1/2 years. She reports that her company is a premier financial services company with a long history of success and traditions dating back to 1864. Today, the company, one of the top 30 bank holding companies in the U.S., is known for exceptional customer service and deep commitment to their people. The strong relationships they forge with their customers and employees provide the foundation for their future success. First Tennessee, First Horizon, has most recently been recognized as one of the nation's employer's of choice being listed Best Adoption-Friendly Workplace in Tennessee; named in the Top 50 Companies for Executive Women in 2009 by the National Association for Female Executives (NAFE); as well as Best Employers in Tennessee list for 2009.

In her position with First Tennessee as a Business Banking Relationship Manager, Kristina provides service to a wide variety of businesses, building long-term customer relationships. This includes calling on current and potential customers; investigating customer needs for business products and services; developing sales proposals; and introducing customers to other departments. She builds and maintains a portfolio mix of valued customers and potential clients.

Kristina moved to Chattanooga four years ago from Nashville and is married to Roland Smith, a Chattanooga native. She and Roland enjoy long weekends such as seeing Van Morrison at the Chicago Theater, going to Talladega, 4-wheeling in their Razor and hanging out on the golf course and the 19th hole! She enjoys exercising and just being with family and friends.

When asked why she joined EWI, she says she was asked to replace a former employee. She said "I have enjoyed every minute of it!!!" She said thank you for making her experience a great one and she looks forward to being more involved as well as getting to know everyone.

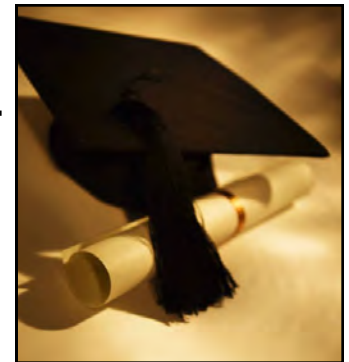
Kristina, we enjoy having you as a part of our EWI family.



*powering your dreams*SM



Carrie Harlin, Director of SIFE and Business Relations at Southern Adventist University, has completed her Master of Professional Studies in Strategic Leadership from Tennessee Technological University. She is guest graduating at Southern Adventist University's commencement on Sunday, May 2. Congratulations, Carrie!



Congratulations to Southern Adventist University's SIFE team (Students in Free Enterprise) who were named Champions of their league at the Regional Competition in Atlanta on April 6. Southern's SIFE team completed projects on our campus, in our community, and internationally such as teaching 8th graders the value of their material possessions; helped a local florist become more energy efficient; taught Southern's student body the importance of being financially fit through six seminars; and created a business plan to implement a bakery in Uruguay to help high school students pay for their education. The bakery is set to begin production in August. Wish them luck as they go to the Nationals in May!



Representative: Karen Hannifin



2010 Best Employers in Tennessee

CHATTANOOGA, Tenn. (April 23, 2010) – Tennessee Valley Federal Credit Union was recently named as one of the “Best Employers in Tennessee.” The annual list of “Best Employers in Tennessee” was created by The City Paper and Business Tennessee magazine, and Best Companies.

Tennessee Valley Federal Credit Union (TVFCU) is the largest credit union in the Chattanooga area with thirteen branches throughout the Tennessee Valley. TVFCU has 239 employees with an average 10 years of service. Forty-five employees have been employed over twenty years. This year another fifty-one employees are celebrating their 10th-19th year anniversary. Blake Strickland, TVFCU’s CEO and President, celebrated his 32nd year anniversary with the company. The longevity of their employees speaks volumes of what type of company TVFCU is. Now you know why they are smiling when you walk into their branches.

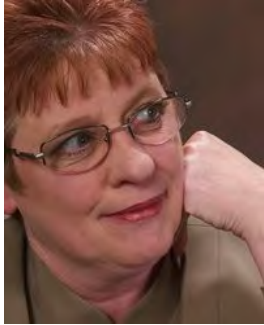
TVFCU has been recognized multiple times by their community and industry throughout their decades of service. The community voted TVFCU to be the “Best of the Best” credit union for the second year in a row and a top mortgage lender in 2009. In addition, TVFCU was voted Marion County’s “Best Bank” by local newspaper readers. 2009 marked TVFCU’s fourth consecutive year to receive the Seal of Satisfaction certification and award. They were also awarded two Diamond Awards by the CUNA Marketing and Business Development Council for the TVFCU Electric Shuttle and TVFCU’s Riverbend Beach in 2009.

The “Best Employers in Tennessee” survey and award program was designed to identify, recognize and honor the best places of employment in Tennessee, benefiting the state’s economy, its workforce and businesses. Companies from across the state entered the two-part survey process and only 25 companies were selected. The combined scores determined the top companies and the final ranking. Best Companies Group evaluated the data collected from the participating companies and used their expertise to determine the final rankings.

For career opportunities with Tennessee Valley Federal Credit Union, visit www.tvfcu.com.

###





Charlie Rosenquist, Senior Provider Technician at Blue Cross Blue Shield of Tennessee, won the election for District 63 Governor for Toastmasters. Way to go, Charlie!

If you are an EWI representative pursuing an undergraduate, Graduate, or postgraduate degree, EWI can help with your expenses!



**APPLY TODAY FOR AN
EWI FELLOWS
SCHOLARSHIP**



Application Deadline: **May 30, 2010**
Application and details available at ewiconnect.com



OFFICERS AND DIRECTORS



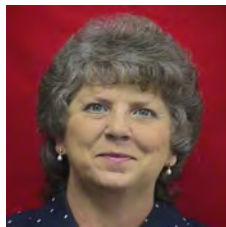
PRESIDENT

Lynda Childress

Luken Holdings

lchildress@lukenholdings.com

423-424-2195



VICE PRESIDENT/PRESIDENT-ELECT

Margaret Browning

Chattanooga Coca-Cola Bottling Co.

mbrowning@ccbcu.com

423-494-0553



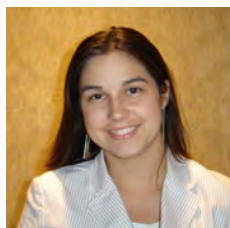
SECRETARY

Barbara Tawater

Northgate Title Escrow, Inc.

barbara@northgatetitle.com

423-875-9533



TREASURER

Heather Burrell

MCA Mike Collins & Associates

hburrell@mcollins.com

423-892-8899

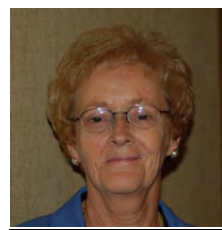


SERGEANT-AT-ARMS

Charlie Rosenquist

BlueCross BlueShield of Tennessee

Charlie_rosenquist@bcbst.com



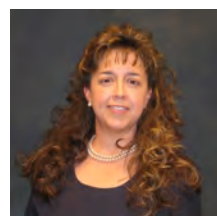
MEMBERSHIP DIRECTOR

Catherine Cox

Lyndhurst Foundation

ccox@lyndhurstfoundation.org

423-756-0767



PROGRAM DIRECTOR

Michelle Withorn

EMJ Corporation

mwithorn@emjcorp.com

423-855-1550



WAYS AND MEANS DIRECTOR

Kerry Smith

State Farm, Chattanooga

kerry@kerrysmith.biz

423-870-1809



PUBLICATIONS DIRECTOR

Barbara Verhine

The University of TN at Chattanooga

barbara-verhine@utc.edu

423-425-4141



DIRECTOR-AT-LARGE

Nancy Harrison

Law Offices of Lloyd Stanley

nharrison@lstanleylaw.com

423-634-2277

Did you know...The EWIconnect is available to you to “toot your horn!” Have you had a promotion? Has your firm done something newsworthy recently? Received an award? Made an acquisition? Share the news with your network of business associates in our newsletter. Simply send your information to Barbara Verhine at: barbara-verhine@utc.edu by the 3rd Monday of each month. We look forward to hearing about your exciting news!

MEMBERS FIRMS

[ADS Security](#)
[Air Filtration Service](#)
[Barge Waggoner Sumner & Cannon, Inc.](#)
[Baylor School](#)
[BI-LO, Inc.](#)
[BlueCross BlueShield of Tennessee](#)

[BMW of Chattanooga](#)
[Catoosa County Climate Controlled & Regular Storage](#)
[Chattanooga Area Chamber of Commerce](#)
[Chattanooga Bakery](#)
[Chattanooga Coca-Cola Bottling Company United](#)
[Chattanooga Convention & Visitors Bureau](#)
[Chattanooga Funeral Home](#)
[Chattanooga Girls Leadership Academy](#)
[Chattanooga Head Start](#)
[Chattanooga State Technical Community College](#)
[Chattanooga Times Free Press](#)
[Citadel Broadcasting Corporation](#)
[CMC Publications](#)
[COS Business Products & Interiors](#)
[Courtyard & Residence Inn by Marriott](#)
[Dimension Designs Inc.](#)
[Diversified Companies, LLC](#)
[ELD Associates, LLC](#)

[EMJ Corporation](#)
[Enterprise Rent-A-Car](#)
[EPB Telecom](#)
[Erlanger Health System](#)
[First Tennessee Bank](#)
[Fitness Together](#)
[Fletcher Bright Company, Realtors](#)

[Heartland Payment Systems](#)
[Kayser-Roth Corporation](#)
[Kenco Logistics](#)
[Lattimore Black Morgan & Cain, PC](#)

[Law Offices of Lloyd Stanley](#)

Linda Pervis
 Sabie Holley
 Jody Hermann
 Brenda Waddell
 Sue Moore
 Pamela Blaylock
 Charlie Rosenquist
 Isabel Ober
 Pamela Grant

 Christie Kelly
 Lori Slatton
 Fredia Higdon
 Margaret Browning

 Lori Dodd

 Kay Low
 Djuana Tomlin
 Joey Martel-James
 Barbara Morgan

 Amy Fowler
 Kelly McCoy
 Kate Pinson
 Connie Mills
 Cindy Ward
 Christine Stephens
 Kim Pendergrass
 Frances Cannon
 Zelma Pack
 Michelle Withorn
 Summer Blevins
 Valerie Lucas
 Priscilla Williams
 Kristina Smith
 Rachel Reeves
 Elaine Peterson
 Sandy Wright
 Kathy Lee
 Debra Gates
 Carolyn Pool
 Beverlee Bartley
 Mary Ellen Maycann
 Nena Powell
 Nancy Harrison

[Luken Holdings](#)

[Lyndhurst Foundation](#)
[MBG Organizing Solutions](#)
[MCA, Mike Collins & Assoc., Inc.](#)

[Miller & Martin PLLC](#)
[Northgate Title Escrow, Inc.](#)
[Oehmig Travel Consultancy](#)
[Office Team](#)
[Reliable Building Solutions, Inc.](#)
[Republic Parking System](#)
[River City Consulting](#)
[Rone Regency Jewelers](#)
[Smith, Laura c/o Studio LaVie'](#)
[Southern Adventist University](#)
[State Farm](#)
[Tennessee Valley Federal Credit Union](#)
[The Chattanooga Hotel](#)
[The Krystal Company](#)
[The University of Tennessee at Chattanooga](#)
[Town & Country Barber Shop](#)
[U.S. Xpress Enterprises, Inc.](#)
[Unique Gifts and Promos](#)

[United Way of Greater Chattanooga](#)
[Wabash Trailer Sales, LLC](#)
[Wild Moon Resort & Ranch](#)
[Yacoubian Tailors](#)

Tammy Babb
 Lynda Childress
 Carolyn Stringer
 Catherine Cox
 Melissa Gratias
 Heather Burrell
 Kristen Smith
 Tanya English
 Barbara Tawater
 Carla Hilling
 Sandy Saylors
 Kathy Sok
 Kelley Eblin
 Joyce Harlin
 Ashley Spinelli
 Laura Smith
 Carrie Harlin
 Kerry Smith
 Karen Hannifin
 Christy Barker
 Colleen Fieser
 Barbara Verhine

 Marti Brown
 Janice Houser
 Nancy Landreth
 Melba Wolfe
 Delores Lewis
 Becky Rudewicz
 Cindy Bruce
 Ani Yacoubian

Sustaining Members

Jan McAfee
 Dottie Jones
 Penny Walker

Life Member

Nancy Templeton