

Letter from the President



Ladies – THANK YOU SO VERY MUCH for allowing me to be your President this past year. I cannot tell you how much I have enjoyed it. Things were very challenging during renewals, and we lost some wonderful firms due to the economy but we bounced back and regained more than we lost. We started a Prayer Team this year and also a monthly Philanthropic Project. I have been blown away by your generosity and willingness to help out those who are less fortunate. You amaze me, ALWAYS.

I also want to thank the wonderful ladies on my board. They made our monthly board meetings fun and exciting. So many wonderful ideas came from you all. You are the best.

Finally, I am excited to be able to finally eat a meal! One thing about being the President, you really never get to eat much because you are always talking! Ha ha!

Margaret Browning will be a great new President and she also will have a great board to support her. However, it takes each one of you to make EWIC what it truly is and I hope that you will show up and be even more committed in this new 2010-2011 year.

I truly love you all - Lynda

**Your Chapter President,
Lynda Childress, CEO, Luken Holdings, Inc.**

2009-2010 Officers and Directors

Lynda Childress, President
Luken Holdings, Inc, Chattanooga

Margaret Browning,
Vice President/President Elect
Chattanooga Coca-Cola Bottling Co.

Barbara Tawater, Secretary
Northgate Title Escrow, Inc, Chattanooga

Heather Burrell, Treasurer
MCA Mike Collins & Associates, Chattanooga

Charlie Rosenquist, Sgt-At-Arms
BlueCross BlueShield of Tennessee

Catherine Cox, Membership Director
Lyndhurst Foundation

Michelle Withorn, Program Director
EMJ Corporation

Kerry Smith, Ways & Means Director
State Farm Chattanooga

Barbara Verhine, Publications Director,
The University of Tennessee at Chattanooga

Nancy Harrison, Director-at-Large
UtiliFlex

Business Meeting and Installation of Officers for 2010-2011

- Date:** **Tuesday, September 14, 2010**
5:30 pm—Meet, Greet and Networking
6:00 pm—Dinner
- Where:** **Doubletree Hotel**
407 Chestnut Street
- Parking:** **Free Parking in the open lot beside the hotel or \$5.00 Valet Parking**



President: Margaret Browning

Margaret Browning of Chattanooga Coca Cola Bottling Company United was elected at the August 2009 meeting to serve a two-year term as Vice-President/President Elect.

**Vice President/President Elect
Michelle Withorn, EMJ Corporation**



**Secretary: Barbara Tawater
Northgate Title Escrow, Inc.**

**Treasurer
Kristina Smith, First Tennessee Bank**



**Sergeant-at-Arms:
Ani Yacoubian, Yacoubian Tailors**

Business Meeting and Installation of Officers for 2010-2011

- Date:** **Tuesday, September 14, 2010**
5:30 pm—Meet, Greet and Networking
6:00 pm—Dinner
- Where:** **Doubletree Hotel**
407 Chestnut Street
- Parking:** **Free Parking in the open lot beside the hotel or \$5.00 Valet Parking**



Membership Director:
Carrie Harlin, Southern Adventist University

Program Director:
Barbara Verhine,
The University of Tennessee at Chattanooga



Communications Director:
Kate Pinson, CMC Publications

Ways and Means Director:
Kathy Sok, Reliable Building Solutions, Inc.



Director-at-Large:
Lynda Childress, Luken Holdings, Inc.

Website Trivia Contest

Email a thank you to one of the outgoing board members for their support or a congratulations to one of the new board members coming in and cc: hburrell@mcollins.com for your name to be entered in a drawing for 3 raffle tickets. View board members and other important information online at www.ewichattanooga.org



August Who Am I?



I love herb gardening and playing with my grandchildren.

I love to travel—especially to NYC. I love Broadway plays and mentoring.

I have lived in Europe.

Were you able to guess?

Beverlee Bartley

Beverlee is the representative for Lattimore Black Morgan & Cain, PC since 2008.

THANK YOU!

It was an honor to share a bit of my "Navy story" with the Chattanooga Chapter of EWI.

Everyone was wonderful to us and we were excited to be a part of the program.

I am on facebook - search Diana Fleshman. Leif "BEAR" Erickson is also on there:)

I cleared my pre-mobilization screening process in Gulfport and am currently beginning my training program in Williamsburg, VA. I should be leaving for Kuwait in the fall.

Again, I extend my sincere thank you for honoring the men and women of the United States Armed Forces.

Respectfully,

YNC Diana Fleshman



Success is to be measured not so much by the position that one has reached in life as by the obstacles which have been overcome while trying to succeed.

Booker T. Washington

Young Women's Leadership Academy Foundation

One Union Square
Crystal Building, Suite 505
Chattanooga, TN 37402

July 29, 2010

Ms. Lynda Childress
Executive Women International
PO Box 11522
Chattanooga, TN 37401

Dear Ms. Childress,

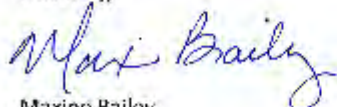
Thank you so much for the engaging the support of EWI members to participate in CGLA's Volunteer Day on July 10, 2010.

The contributions of EWI members have helped CGLA to build a culture of achievement among students. As we embark on our second academic year, we are so grateful for the efforts of EWI members to ensure a welcoming and inspiring school environment for students and their families.

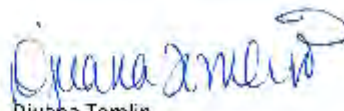
Thank you so much for your in-kind gift; the support of organizations like EWI is critical for achieving CGLA's vision that *all young women have equitable access to the skills, knowledge, and opportunities to succeed in college and to develop as leaders in their communities and in the world.*

We are so grateful for your investment in CGLA and in the futures of the girls that we serve.

Sincerely,



Maxine Bailey
CGLA Co-Founder
YWIA Foundation Executive Director



Djuana Tomlin
CGLA Family & Community
Engagement Specialist

AUG 2 2010



Partially sponsored by the Chattanooga Girls Leadership Academy





Ways and Means Committee Report

By: Kerry Smith

Your Ways and Means Committee has almost sold out for our tickets/tables/ sponsorships for the annual Barnyard Auction Thursday, October 21, 2010, at The Doubletree Hotel in downtown Chattanooga! Can you believe it?? The money raised from this fundraiser is dedicated to funding scholarship funds for single mothers through the Jean Bradford Scholarship at UTC and Chattanooga State. This fundraiser proves to be loads of fun for the participants while raising money for a worthwhile cause.

Some individual tickets for the event are still available at \$35.00 each including dinner, \$300 for a table of 10 or Corporate sponsorships are also available. We will have over \$20,000 worth of donated goods and services to be auctioned, including overnight stays in some great cities, electronics including an HD TV, golf packages, sports packages, spa packages and more. Bids start at \$1!

At September 14th's meeting, our own, Kelly McCoy, will be our auctioneer to help you get the idea of the auction. Bring your dollar bills for the special event and we'll auction off some special items to simulate the Barnyard auction for you.

We need your help!! We are asking each of our EWI of Chattanooga members to solicit 3-4 items for the auction. Sharon Diegel is coordinating our donations so please contact her at 423-321-1651 or send her an e-mail at sdiegel@millermartin.com with your commitments for the auction/raffle. Please bring your auction/raffle items to our September meeting or call Sharon to coordinate the pick-up.

Please note****We will be storing the items this year at Kathy Sok's business at Reliable Building Solutions, Inc. located at 6232 Airpark Drive, Chattanooga.

For ticket information, call Kerry Smith at State Farm at 423-870-1809 and for sponsorships or table reservations, contact Ani Yacoubian at 423-265-0187 for tickets.

Membership Committee Report

By: Catherine Cox



We now have 65 firms, 10 additional representatives, three sustaining and one life member.

Our two newest members are: Karan Avant of Artech Design Group and Denise Postelle of CBL & Assoc. Management. There is an interesting story behind the membership of Denise, so be sure and talk with her.

We have had several postings lately and are looking forward to continuing to grow the Chattanooga Chapter.

Catherine Cox, Chair
Membership Committee



CONNECTIONS | CAREERS | COMMUNITY

presents the

13th Annual Barnyard Auction

Where: The DoubleTree Hotel

When: Thursday, October 21st, 5:30pm

- 5:30 p.m. – Doors Open to View Auction Items
- 5:30 p.m. – Cash Bar Opens
- 6:30 p.m. – Dinner Served
- 7:15 p.m. – Auction Starts

~ Casual Attire ~

We invite you to attend this extremely fun event. Here's how it works:

- A number is assigned at your dinner seating.
- A list of all the auction items is there and on display around the room.
- No item on the list is more than a \$5 bid...including *TV's, weekend getaways, spa packages, CD Players, tickets to various attractions around town*, etc.
- A bucket is in the center of your table.
- When the item on the list is up for auction, put the designated amount (from the list) in the bucket on your table.
- Jump up and raise your number card high in the air. (Get excited!)
- The auctioneer will call out numbers around the room.
- A gong will sound and the last number called wins the item!

Proceeds to benefit EWI Scholarships for women at

The University of Tennessee at Chattanooga and Chattanooga State Technical Community College

A Video Spotlighting Scholarship Recipients Donated by:

pulse productions

Reading Rally 2010

Loving our Land and Water

Friday, September 17, 2010
9:00 am—1:00 pm
Daisy Head Start, Soddy Daisy Center
9531 Ridge Trail Road
Soddy Daisy, TN 37379
Phone: (423) 842-9412

For More Information Contact:
Joey James at (423) 309-5332

LIST OF NEEDS:

Readers for the children

Persons to help with control

HOLDERS for the babies

Someone to take pictures

Someone to help with special children and other needs as they arise.



DIRECTIONS:

Go North 153, past Northgate Mall, you will pass Dunkin Donuts, keep straight and you will pass a McDonald's Restaurant and Chick Fil-a. Beside Clements Antiques you will merge onto US 27 toward Dayton.

Get off at Sequoyah exit toward Soddy Daisy. Turn left and follow signs for health department. A sign will say health department and you will turn right onto West Ridge Trail. Go over tracks and take an immediate left. Then take immediate right. And immediate other right. Center will be on right—red brick—go to front door.

Melissa's Organizing Tips for September



Email Management – Controlling Spam

One of the most frustrating aspects of email management is the area where people tend to feel the most powerless – spam. Although there is no “magic bullet,” there are some steps that you and your company can take to reduce spam.

Avoid Spam

The following methods are commonly used to build commercial email distribution lists:

- ◆ Attendance lists for conferences, trade shows, etc. – you can ask to be left off that list but then fellow participants cannot contact you afterwards
- ◆ Fishbowls and business cards – there is no free lunch
- ◆ Purchased/rented lists – some professional associations make money by selling your personal information to vendors

Filter Spam

If you use web-based email providers, familiarize yourself with their spam filtering capabilities. You can choose a provider based on their ability to protect you from spam.

Report Spam

If you feel that an email you received is abusive or profane, you can forward it to the FTC at spam@uce.gov. They will put it in a database that helps them prosecute those who violate CAN-SPAM laws.

Unsubscribe From Email Marketers

If you feel comfortable that a company is reputable, then go ahead and unsubscribe. Otherwise, be cautious – some unscrupulous companies wait for people to unsubscribe as a way of checking whether your email address is valid. If an unsubscribe link is fake, can't be found or is not honored, you can report the company to the Federal Trade Commission (FTC) by filing a complaint at www.ftccomplaintassistant.gov.

For more productivity tips, please go to www.mbgorganizing.com and sign up for my free monthly newsletter.





Carolyn Pool

Kenco Management Services, LLC

Carolyn is Corporate Receptionist and Administrative Assistant for Kenco. She has been with the company a little over two years and has found its employees to be some of the finest she has ever worked with.

In 1950, Kenco began with only one 100,000 square-foot facility in Chattanooga, TN. The only two employees were the founders—Jim Kennedy, Jr. and Sam Smartt. Today, Kenco is one of the nation's leading third-party logistics providers (3PL). That single warehouse has grown to over 100 facilities and more than 25 million square feet of warehouse space in 31 states and Canada. Kenco's core competencies include not only logistic services but also transportation, real estate management and material handling equipment. The Kenco Family of Companies includes Kenco Logistic Services, Kenco Transportation, Kenco Toyota-Lift, Kenco Management Services, and JDK Real Estate.

Carolyn and her husband, Dee, have three children, four grandchildren, and six great grandchildren. (She isn't old enough for greats!) Her relationship with the Lord and her family are her passion. She values relationships with friends, both longtime and new. Gardening is her hobby, which is also her best therapy, and she enjoys reading.

This is the second time Carolyn has been a representative in EWI. Carolyn Stringer recruited Olan Mills some years ago and she was their rep. After she was employed by Kenco, her new employer was recruited by the inimitable Carolyn Stringer. She is impressed with the talents, leadership abilities, passion, and diversity of the women in the Chattanooga Chapter. Carolyn, we are proud to have you be part of our group again. Welcome back!



CONNECTIONS | CAREERS | COMMUNITY

Our Mission

EWI brings together key individuals from diverse businesses for the purpose of promoting member firms, enhancing personal and professional development, and encouraging community involvement.

Our Vision

To be a professional organization that creates value for its member firms and their representatives through career development, business connectivity, and involvement in local communities.

Our Strategic Goals

- 1. To strengthen, expand and broaden membership.**
- 2. To provide member firms with meaningful benefits.**
- 3. To actively promote education for all representatives.**
- 4. To achieve a high level of community visibility through service.**

CORPORATE DATES TO NOTE

September 23-25, 2010
63rd LCAM in Kansas City

September 22-24, 2011
64th LCAM in Minneapolis

Executive Women International—EWI of Chattanooga

Lynda Childress, 2009-2010 Chapter President

Luken Holdings, Inc.

E-Mail: lchildress@lukenholdings.com

Ph: 423-756-1200

Fax: 423-266-5913

Executive Women International

EWI of Chattanooga

P.O. Box 11522

Chattanooga, TN 37401

OFFICERS AND DIRECTORS



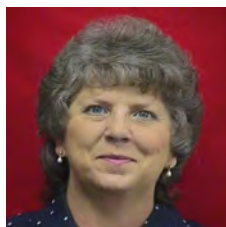
PRESIDENT

Lynda Childress

Luken Holdings

lchildress@lukenholdings.com

423-424-2195



VICE PRESIDENT/PRESIDENT-ELECT

Margaret Browning

Chattanooga Coca-Cola Bottling Co.

mbrowning@ccbcu.com

423-494-0553



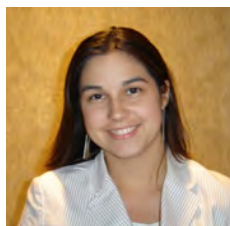
SECRETARY

Barbara Tawater

Northgate Title Escrow, Inc.

barbara@northgatetitle.com

423-875-9533



TREASURER

Heather Burrell

MCA Mike Collins & Associates

hburrell@mcollins.com

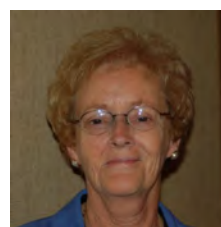
423-892-8899



SERGEANT-AT-ARMS

Charlie Rosenquist

BlueCross BlueShield of Tennessee

Charlie_rosenquist@bcbst.com

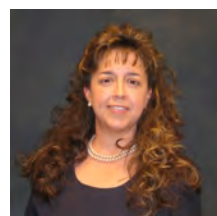
MEMBERSHIP DIRECTOR

Catherine Cox

Lyndhurst Foundation

ccox@lyndhurstfoundation.org

423-756-0767



PROGRAM DIRECTOR

Michelle Withorn

EMJ Corporation

mwithorn@emjcorp.com

423-855-1550



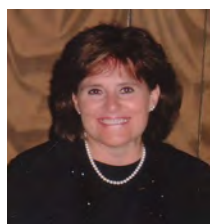
WAYS AND MEANS DIRECTOR

Kerry Smith

State Farm, Chattanooga

kerry@kerrysmith.biz

423-870-1809



PUBLICATIONS DIRECTOR

Barbara Verhine

The University of TN at Chattanooga

barbara-verhine@utc.edu

423-425-4141



DIRECTOR-AT-LARGE

Nancy Harrison

UtiliFlex

nharrisonewi@gmail.com

423-280-7582

Did you know...The EWIconnect is available to you to “toot your horn!” Have you had a promotion? Has your firm done something newsworthy recently? Received an award? Made an acquisition? Share the news with your network of business associates in our newsletter. Simply send your information to Barbara Verhine at: barbara-verhine@utc.edu by the 3rd Monday of each month. We look forward to hearing about your exciting news!

MEMBERS FIRMS

[ADS Security](#)
[Air Filtration Service](#)
[Artech Design Group](#)
[Barge Waggoner Sumner & Cannon, Inc.](#)
[Baylor School](#)
[BI-LO, Inc.](#)
[BlueCross BlueShield of Tennessee](#)

[BMW of Chattanooga](#)
[Catoosa County Climate Controlled & Regular Storage](#)
[CBL & Assoc. Management](#)
[Chattanooga Area Chamber of Commerce](#)
[Chattanooga Bakery](#)
[Chattanooga Coca-Cola Bottling Company United](#)
[Chattanooga Convention & Visitors Bureau](#)
[Chattanooga Funeral Home](#)
[Chattanooga Girls Leadership Academy](#)
[Chattanooga Head Start](#)
[Chattanooga State Technical Community College](#)
[Chattanooga Times Free Press](#)
[Citadel Broadcasting Corporation](#)
[CMC Publications](#)
[COS Business Products & Interiors](#)
[Courtyard & Residence Inn by Marriott](#)
[Dimension Designs Inc.](#)
[Diversified Companies, LLC](#)
[ELD Associates, LLC](#)

[EMJ Corporation](#)
[Enterprise Rent-A-Car](#)
[EPB Telecom](#)
[Erlanger Health System](#)
[First Tennessee Bank](#)
[Fitness Together](#)
[Fletcher Bright Company, Realtors](#)

[Heartland Payment Systems](#)
[Kayser-Roth Corporation](#)
[Kenco Logistics](#)
[Lattimore Black Morgan & Cain, PC](#)

Linda Pervis
 Sabie Holley
 Karan Avant
 Jody Hermann
 Brenda Waddell
 Sue Moore
 Pamela Blaylock
 Charlie Rosenquist
 Isabel Ober
 Pamela Grant

 Denise Postelle
 Christie Kelly
 Lori Slatton
 Fredia Higdon
 Margaret Browning
 Lori Dodd

 Kay Low
 Djuana Tomlin
 Joey Martel-James
 Barbara Morgan

 Amy Fowler
 Kelly McCoy
 Kate Pinson
 Connie Mills
 Cindy Ward
 Christine Stephens
 Kim Pendergrass
 Frances Cannon
 Zelma Pack
 Michelle Withorn
 Summer Blevins
 Valerie Lucas
 Priscilla Williams
 Kristina Smith
 Rachel Reeves
 Elaine Peterson
 Sandy Wright
 Kathy Lee
 Debra Gates
 Carolyn Pool
 Beverlee Bartley
 Mary Ellen Maycann
 Nena Powell

[Luken Holdings](#)

[Lyndhurst Foundation](#)
[MBG Organizing Solutions](#)
[MCA, Mike Collins & Assoc., Inc.](#)

[Miller & Martin PLLC](#)
[Northgate Title Escrow, Inc.](#)
[Oehmig Travel Consultancy](#)
[Office Team](#)
[Philips Lightolier](#)
[Reliable Building Solutions, Inc.](#)
[Republic Parking System](#)
[River City Consulting](#)
[Rone Regency Jewelers](#)
[Smith, Laura c/o Studio LaVie'](#)
[Southern Adventist University](#)
[State Farm](#)
[Tennessee Valley Federal Credit Union](#)
[The Chattanooga Hotel](#)
[The Krystal Company](#)
[The University of Tennessee at Chattanooga](#)
[Town & Country Barber Shop](#)
[U.S. Xpress Enterprises, Inc.](#)
[Unique Gifts and Promos](#)

[United Way of Greater Chattanooga](#)
[UtiliFlex](#)
[Wabash Trailer Sales, LLC](#)
[Wild Moon Resort & Ranch](#)
[Yacoubian Tailors](#)

Tammy Babb
 Lynda Childress
 Carolyn Stringer
 Catherine Cox
 Melissa Gratias
 Heather Burrell
 Kristen Smith
 Tanya English
 Barbara Tawater
 Carla Hilling
 Sandy Saylor
 Sheila Thompson
 Kathy Sok
 Kelley Eblin
 Joyce Harlin
 Ashley Spinelli
 Laura Smith
 Carrie Harlin
 Kerry Smith
 Karen Hannifin
 Christy Barker
 Colleen Fieser
 Barbara Verhine

 Marti Brown
 Janice Houser
 Nancy Landreth
 Melba Wolfe
 Delores Lewis
 Nancy Harrison
 Becky Rudewicz
 Cindy Bruce
 Ani Yacoubian

Sustaining Members

 Life Member

Jan McAfee
 Dottie Jones
 Penny Walker

 Nancy Templeton